

DV-I™ Prime Viscometer

The only viscometer in its class to offer continuous sensing and data display!

Displayed Info:

- Viscosity (cP or mPa•s)
- % Torque
- Speed/Spindle
- Temperature (°C or °F)
if optional RTD Temperature Probe is installed

RS-232 PC interface for use with optional Wingather Software

Analog outputs for recording torque and temperature

18 speeds provide great range capability

Direct access to time measurement function (time to torque, time to stop)

Accuracy: ±1.0% of range

Repeatability: ±0.2%

Output connection to printer

Auto Range Showing
- Full Scale Range (FSR) at 100%
- Maximum viscosity measured with Spindle/Speed combination

Scroll Keys for Simple Selection of Speed & Spindle

Optional RTD Temperature Probe DVP-94Y
Instrument must be configured upon purchase.

Temperature off-set capability to ±1°C



What's Included?

- Instrument
- 6 spindles (RV/HA/HB) (p45) or 4 spindles (LV) (p45)
- Spindle Guard Leg*
- Lab Stand (Model S) (p50)
- Carrying Case
- *Not applicable to HA or HB torque models

Optional Accessories

- Wingather Software ▶
- RTD Temperature Probe
- Ball Bearing Suspension (RV/HA/HB) (p50)
- Viscosity Standards (p52)
- RV/HA/HB-1 Spindle (p45)
- Quick Action Lab Stand (p50)
- EZ-Lock Spindle Coupling System (p50)
- Temperature Bath (p33-35)
- Small Sample Adapter (p38)
- UL Adapter (p40)
- Thermosel (p36)
- Helipath Stand with T-bar Spindles (p42)
- Spiral Adapter (p44)
- DIN Adapter (p44)
- Quick Connect/Extension Links (p49)
- Vane Spindles (p43 & 48)
- Protective Keypad Covers (p51)

| MODEL | VISCOSITY RANGE cP(mPa•s) | | SPEEDS | |
|---------|------------------------------|------|--------|----------------------|
| | Min. | Max. | RPM | Number of Increments |
| LVDV-IP | 1* | 2M | .3-100 | 18 |
| RVDV-IP | 100 | 13M | .3-100 | 18 |
| HADV-IP | 200 | 26M | .3-100 | 18 |
| HBDV-IP | 800 | 104M | .3-100 | 18 |

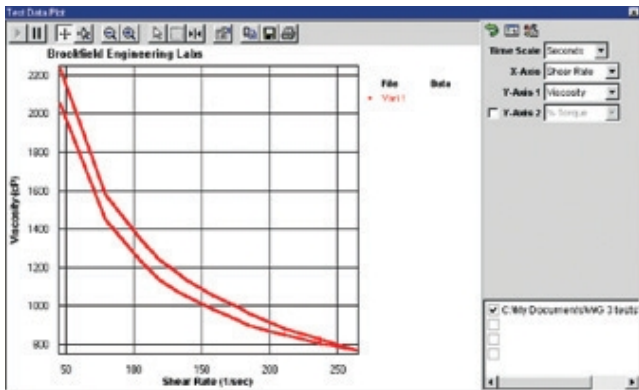
* Minimum ranges can be extended to as low as 1 cP with the use of Brookfield Accessories
 ** Standard torque range values
 M = 1 million cP = Centipoise mPa•s = Millipascal•seconds

Wingather Software Optional

DATA COLLECTION SOFTWARE TO COLLECT, ANALYZE AND RECORD TEST DATA

Wingather software provides an easy way to gather data and plot graphs while creating permanent test records. Data can be saved in the program or exported to Excel.

- Automates data collection to save time
- Reduces operator error
- Math modeling for yield stress calculations, plastic index
- Plot up to four data sets for comparisons



The screenshot displays the 'Test Data Grid' window. It shows a table with 15 rows of test data. The columns are: Viscosity, Speed, % Torque, Shear Stress, Shear Rate, Temperature, Time Interval, and Date/Time. The data is as follows:

| Viscosity | Speed | % Torque | Shear Stress | Shear Rate | Temperature | Time Interval | Date/Time |
|-----------|-------|----------|--------------|------------|-------------|---------------|---------------------|
| 1086.10 | 1.00 | 30.9 | 1.40 | 1.29 | 34.4 | 00:00.4 | 01/12/2007 12:16:17 |
| 698.29 | 1.50 | 29.8 | 1.35 | 1.94 | 34.1 | 00:26.2 | 01/12/2007 12:16:44 |
| 606.32 | 2.00 | 34.5 | 1.56 | 2.58 | 34.0 | 00:16.6 | 01/12/2007 12:17:01 |
| 530.84 | 2.50 | 37.7 | 1.78 | 3.23 | 33.6 | 00:46.4 | 01/12/2007 12:17:49 |
| 427.44 | 3.00 | 36.5 | 1.65 | 3.87 | 33.5 | 00:11.3 | 01/12/2007 12:18:01 |
| 289.43 | 5.00 | 41.2 | 1.87 | 6.45 | 33.5 | 00:00.2 | 01/12/2007 12:18:10 |
| 244.28 | 6.00 | 41.7 | 1.89 | 7.74 | 33.4 | 00:10.4 | 01/12/2007 12:18:21 |
| 175.74 | 10.00 | 56.0 | 2.33 | 12.90 | 33.3 | 00:00.4 | 01/12/2007 12:18:30 |
| 152.90 | 12.00 | 55.2 | 2.37 | 15.48 | 33.2 | 00:14.4 | 01/12/2007 12:18:46 |
| 105.27 | 20.00 | 59.9 | 2.72 | 25.80 | 33.1 | 00:12.4 | 01/12/2007 12:18:59 |
| 79.32 | 30.00 | 67.7 | 3.07 | 38.70 | 33.0 | 00:09.2 | 01/12/2007 12:19:09 |
| 55.54 | 50.00 | 79.0 | 3.30 | 64.30 | 32.9 | 00:05.9 | 01/12/2007 12:19:16 |
| 49.97 | 60.00 | 85.3 | 3.87 | 77.40 | 32.9 | 00:06.8 | 01/12/2007 12:19:24 |



DV-I Prime CP

The DV-I Prime is available in a Wells/Brookfield Cone & Plate Version

Must be ordered when instrument is first purchased. (p16)