

# DV-II+™ Pro Viscometer

our most versatile continuous sensing viscometer

**Displayed Info:**

- Viscosity (cP or mPa•s)
- Temperature (°C or °F)
- Shear Rate/Stress
- % Torque
- Speed/Spindle

**Built-in Options**

- Timed Tests
- Choice of Units
- Choice of Speeds

**Scroll Keys** for Simple Selection of Speed & Spindle

**54 selectable speeds** provide superior range of viscosity/shear rate measurements

**Accuracy: ±1.0% of range**

**Repeatability: ±0.2%**

**Built-in RTD Temperature Probe**

**Auto Range Showing**

- Full Scale Range (FSR) at 100%
- Maximum viscosity measured with Spindle/Speed combination

**Bi-directional RS-232**

**PC Interface** provides optional computer control and automatic data gathering capability

**Download custom test programs**

with DV Loader software (included with instrument)



## What's Included?

- Instrument
  - 6 spindles (RV/HA/HB) (p45) or 4 spindles (LV) (p45)
  - DV Loader software ▶
  - RTD Temperature Probe
  - Spindle Guard Leg\*
  - Lab Stand (Model S) (p50)
  - Carrying Case
- \*Not applicable to HA or HB torque models

## Optional Accessories

- Rheocalc32 Software ▶
- Wingather Software ▶
- Ball Bearing Suspension (RV/HA/HB) (p50)
- Viscosity Standards (p52)
- RV/HA/HB-1 Spindle (p45)
- EZ-Lock Spindle Coupling System (p50)
- Quick Action Lab Stand (p50)
- Temperature Bath (p33-35)
- Small Sample Adapter (p38)
- UL Adapter (p40)
- Thermosel (p36)
- Helipath Stand with T-bar Spindles (p42)
- Spiral Adapter (p44)
- DIN Adapter (p44)
- Quick Connect/Extension Links (p49)
- Vane Spindles (p43 & 48)
- Protective Keypad Covers (p51)

MODEL	VISCOSITY RANGE cP(mPa•s)		SPEEDS	
	Min.	Max.	RPM	Number of Increments
<b>LVDV-II+P</b>	1†	6M	.01-200	54
<b>RVDV-II+P</b>	100††	40M	.01-200	54
<b>HADV-II+P</b>	200††	80M	.01-200	54
<b>HBVDV-II+P</b>	800††	320M	.01-200	54

† 1 cP achieved with UL Adapter accessory. 15 cP on LV with standard spindles.  
 †† Minimum viscosity is achieved with optional RV/HA/HB-1 spindle.  
 M = 1 million cP = Centipoise mPa•s = Millipascal•seconds

## DV Loader Software Included

CREATE CUSTOM TESTS USING YOUR PC

DV Loader allows users to create repeatable custom tests with choices of parameters for speed, test duration, etc. to be downloaded from a PC to a DV-II+ Pro Viscometer. Disconnect the DV-II+Pro from the PC for secure, user-defined test methods.



*Connect DV-II+Pro to a PC to create up to 10 custom tests on your PC and then download test parameters to your viscometer*



## DV-II+Pro CP

The DV-II+Pro is available in a Wells/Brookfield Cone & Plate Version

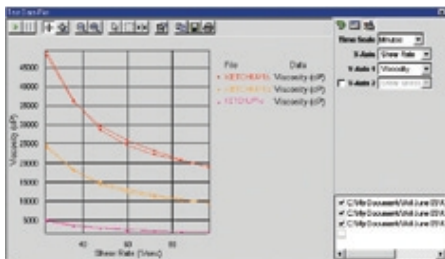
Must be ordered when instrument is first purchased. (p.16)

## Rheocalc32 Software Optional

GET TOTAL CONTROL OF YOUR INSTRUMENT AND TEST PARAMETERS

Automatically control and collect data with Rheocalc32 and a dedicated computer. Rheocalc32 can analyze data, generate multiple plot overlays, print tabular data, run math models and perform other time-saving routines. Data can be saved in the program or exported to Excel.

- Controls test parameters with powerful scripting capabilities
- Wizard for self-guiding creation of test programs
- Looping functions for repetitive tasks
- Automates data collection to save time
- Math modeling for yield stress calculations, plastic index
- Plot up to four data sets for comparisons

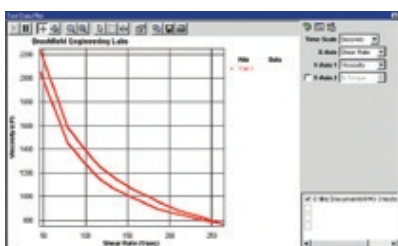


## Wingather Software Optional

DATA COLLECTION SOFTWARE TO COLLECT, ANALYZE AND RECORD TEST DATA

Wingather software provides an easy way to gather data and plot graphs while creating permanent test records. Data can be saved in the program or exported to Excel.

- Automates data collection to save time
- Reduces operator error
- Math modeling for yield stress calculations, plastic index
- Plot up to four data sets for comparisons



Time	Shear Rate	Viscosity	Temperature
0.000	1.000	30.00	1.000
0.000	1.500	28.00	1.000
0.000	2.000	26.00	1.000
0.000	2.500	24.00	1.000
0.000	3.000	22.00	1.000
0.000	3.500	20.00	1.000
0.000	4.000	18.00	1.000
0.000	4.500	16.00	1.000
0.000	5.000	14.00	1.000
0.000	5.500	12.00	1.000
0.000	6.000	10.00	1.000
0.000	6.500	8.00	1.000
0.000	7.000	6.00	1.000
0.000	7.500	4.00	1.000
0.000	8.000	2.00	1.000
0.000	8.500	0.00	1.000
0.000	9.000	0.00	1.000
0.000	9.500	0.00	1.000
0.000	10.000	0.00	1.000

## DV-II+Pro EXTRA™ Viscometer

The "EXTRA" combines all the versatile viscosity testing capabilities of a DV-II+Pro with time and money saving features such as a durable ball bearing suspension system, EZ-Lock Spindle Coupling, Quick Action Lab Stand and FREE Rheocalc software.